



DOOR COMPANY

ELECTRIC SECTIONAL OVERHEAD

EFD-SOE

The FRANK DOOR Electric Sectional Overhead is used in applications where there is minimum side and head room or when several door openings are in close proximity, such as in warehouse loading docks. Suitable for interior and exterior walls in coolers, freezers or industrial buildings. where power operation is desirable. Available in **standard lift** or **high lift**, depending on amount of headroom clearance.

Standard Features

Finish

- 24 gauge metal
- 040 embossed aluminum

No Wood Construction

Insulation

- Foamed in place polyurethane
- R value 8 per inch

Casing Mounted Bulb Gasket

Power Operator

- Self-adjusting travel limits
- Mid cycle stop
- Time delay to close
- 3 button switch for all dock door applications
- 2 pull cords for all interior applications

Track

- 11 gauge galvanized steel J track with 3" wheels
- Heavy duty hardware

Extruded Aluminum Side Casings and Headers

- Extruded one piece design
- Insulated
- Increased durability
- Lower maintenance

Torsion Spring Counter Balance System

Exterior Pull Handle

Interior Pull Handle

Heater Cable for Freezer Doors

- Perimeter heat on four sides of all door panels
- Self regulating
- 120/1/60 UL Listed



Options

Extruded Aluminum Back-up Header and Casings

Other Finishes Available

Kickplate

Lock

View Window

Power Options

Loop Detector

Motion Detector

Photoelectric Sensor

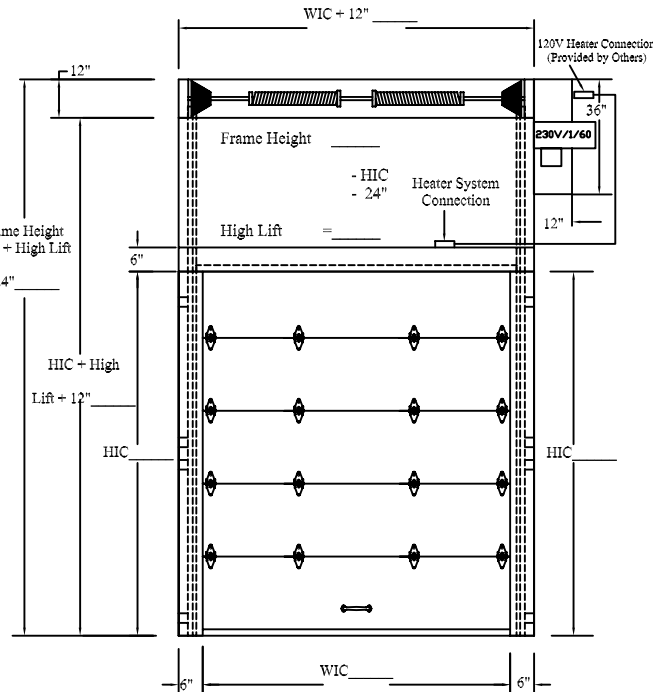
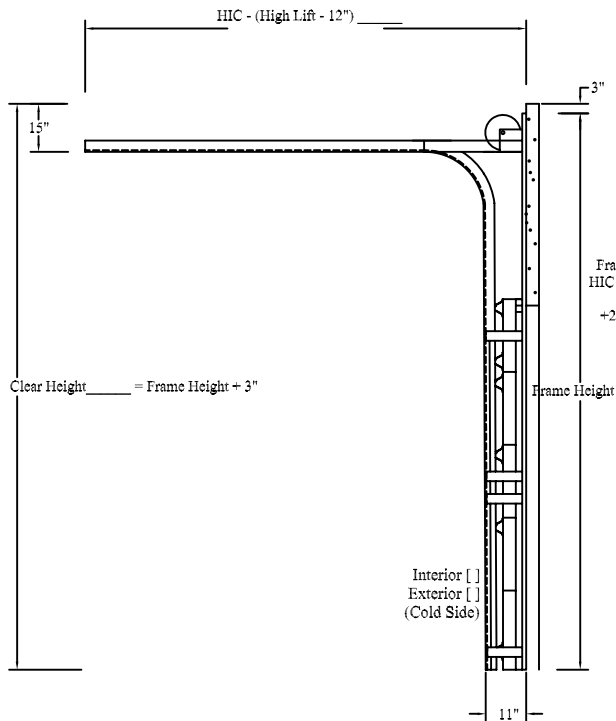
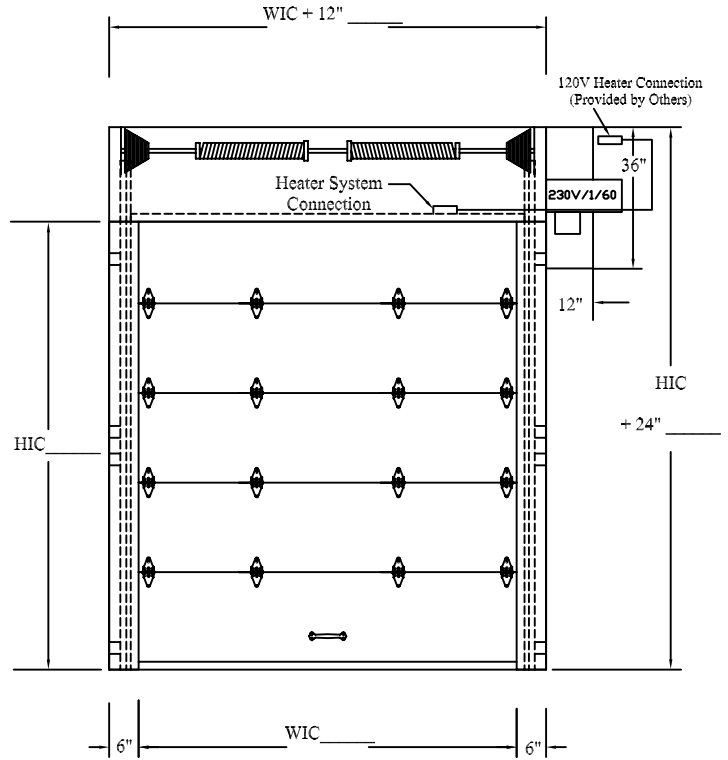
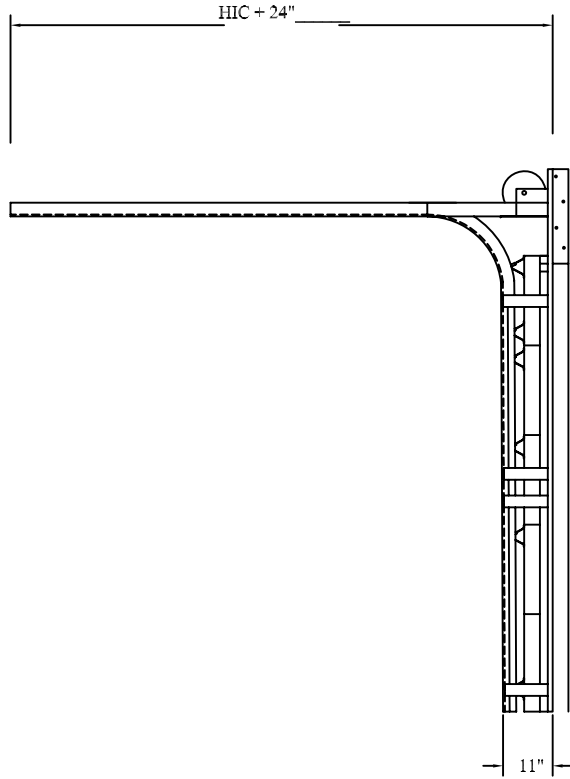
Remote Control

America's "New Standard" for Cold Storage Doors

ELECTRIC SECTIONAL OVERHEAD



DOOR COMPANY



DISCLAIMER: As we are always striving to improve our products, FRANK DOOR Company reserves the right to alter specifications and design without incurring obligation.

America's "New Standard" for Cold Storage Doors