



DOOR COMPANY

# ELECTRIC VERTICAL LIFT

## EFD-VLE

The FRANK DOOR Electrical Vertical Lift is used in applications when power operated openings and closings are important and there is minimum side room or several door openings are in close proximity, such as warehouse loading docks. Suitable for interior or exterior walls in coolers, freezers or industrial buildings.

### Standard Features

**Finish**

- 24 gauge metal
- 040 embossed aluminum

**No Wood Construction**

**Insulation**

- Foamed in place polyurethane
- R value 8 per inch

**Panel Mounted Gasket**

**Power Operator**

- Self-adjusting travel limits
- Mid cycle stop
- Time delay to close
- 3 button switch for all dock door applications
- 2 pull cords for all interior applications

**Track**

- 11 gauge galvanized steel J track with 3" wheels
- Heavy duty hardware

**Extruded Aluminum Side Casings and Header**

- Extruded one piece design
- Insulated
- Increased durability
- Lower maintenance

**Sheave Assembly**

- Includes chain, sprockets and counter weights

**Exterior Pull Handle**

**Interior Pull Handle**

**Heater System for Freezer Doors**

- Perimeter heat on four sides of door panel and three sides of door frame
- Self regulating
- 120/1/60 UL listed



LISTED  
Door Panel  
Assembly



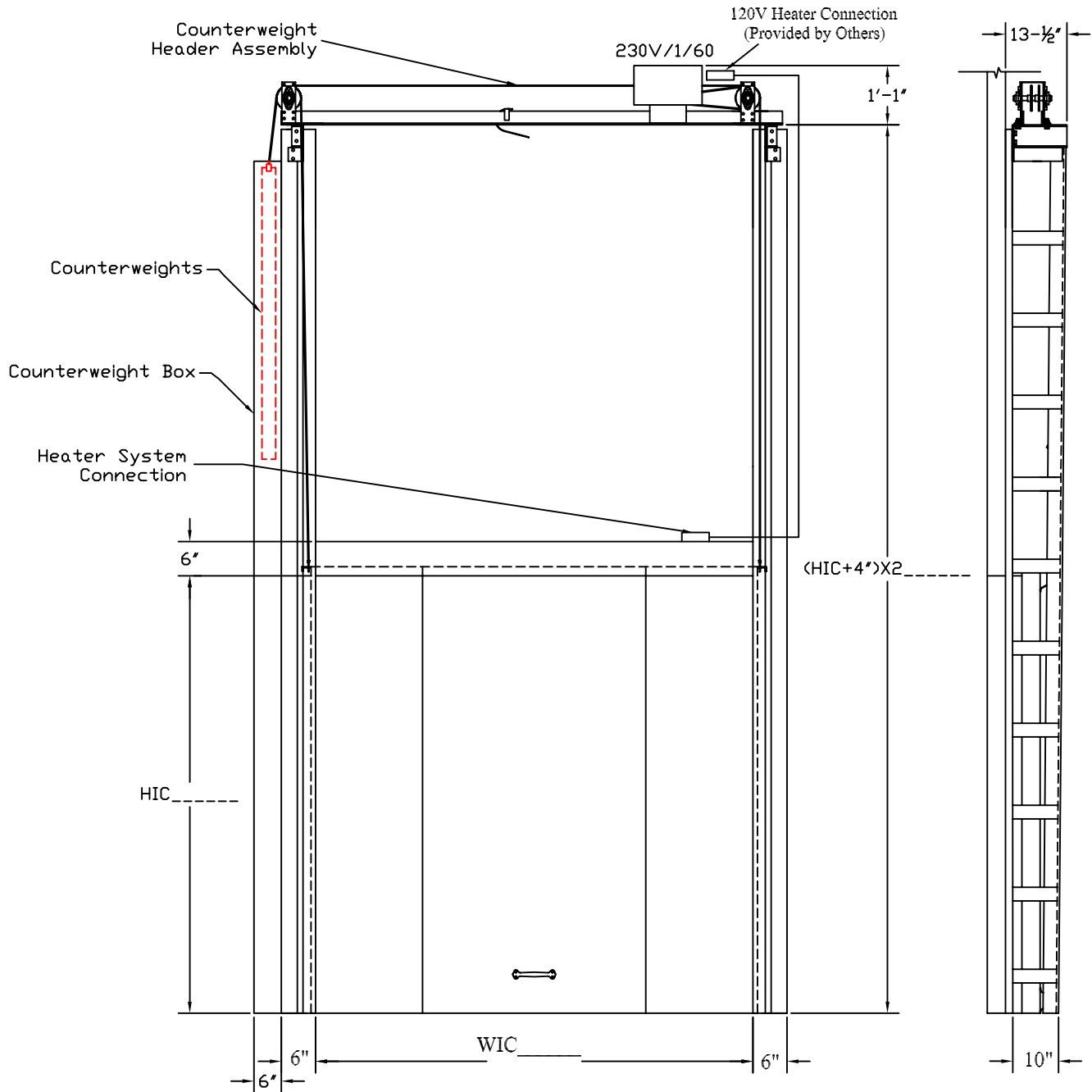
### Options

- Extruded Aluminum Back-up Header and Casings
- Other Finishes Available
- Kickplate
- Lock
- View Window
- Wicket Door

### Power Options

- Loop Detector
- Motion Detector
- Photoelectric Sensor
- Remote Control

America's "New Standard" for Cold Storage Doors



Left Side Counterweight Shown

DISCLAIMER: As we are always striving to improve our products, FRANK DOOR Company reserves the right to alter specifications and design without incurring obligation.

America's "New Standard" for Cold Storage Doors