



DOOR COMPANY

MANUAL VERTICAL LIFT

## EFD-VLM

The FRANK DOOR Manual Vertical Lift is used in applications where there is minimum side room or when several door openings are in close proximity, such as in warehouse loading docks. Suitable for interior and exterior walls in coolers, freezers or industrial buildings.

### Standard Features

#### Finish

- 24 gauge metal
- 040 embossed aluminum

#### No Wood Construction

#### Insulation

- Foamed in place polyurethane
- R value 8 per inch

#### Panel Mounted Dual Blade Santoprene Gasket

#### Track

- 11 gauge galvanized steel J track with 3" wheels
- Heavy duty hardware

#### Extruded Aluminum Side Casings and Header

- Extruded one piece design
- Insulated
- Increased durability
- Lower maintenance

#### Sheave Assembly

- Includes chain, sprockets and counter weights

#### Exterior Pull Handle

#### Interior Pull Handle

#### Heater System for Freezer Doors

- Perimeter heat on four sides of door panel and three sides of door frame
- Self regulating
- 120/1/60 UL Listed



LISTED  
Door Panel  
Assembly



### Options

Extruded Aluminum Back-Up Header and Casings

Other Finishes Available

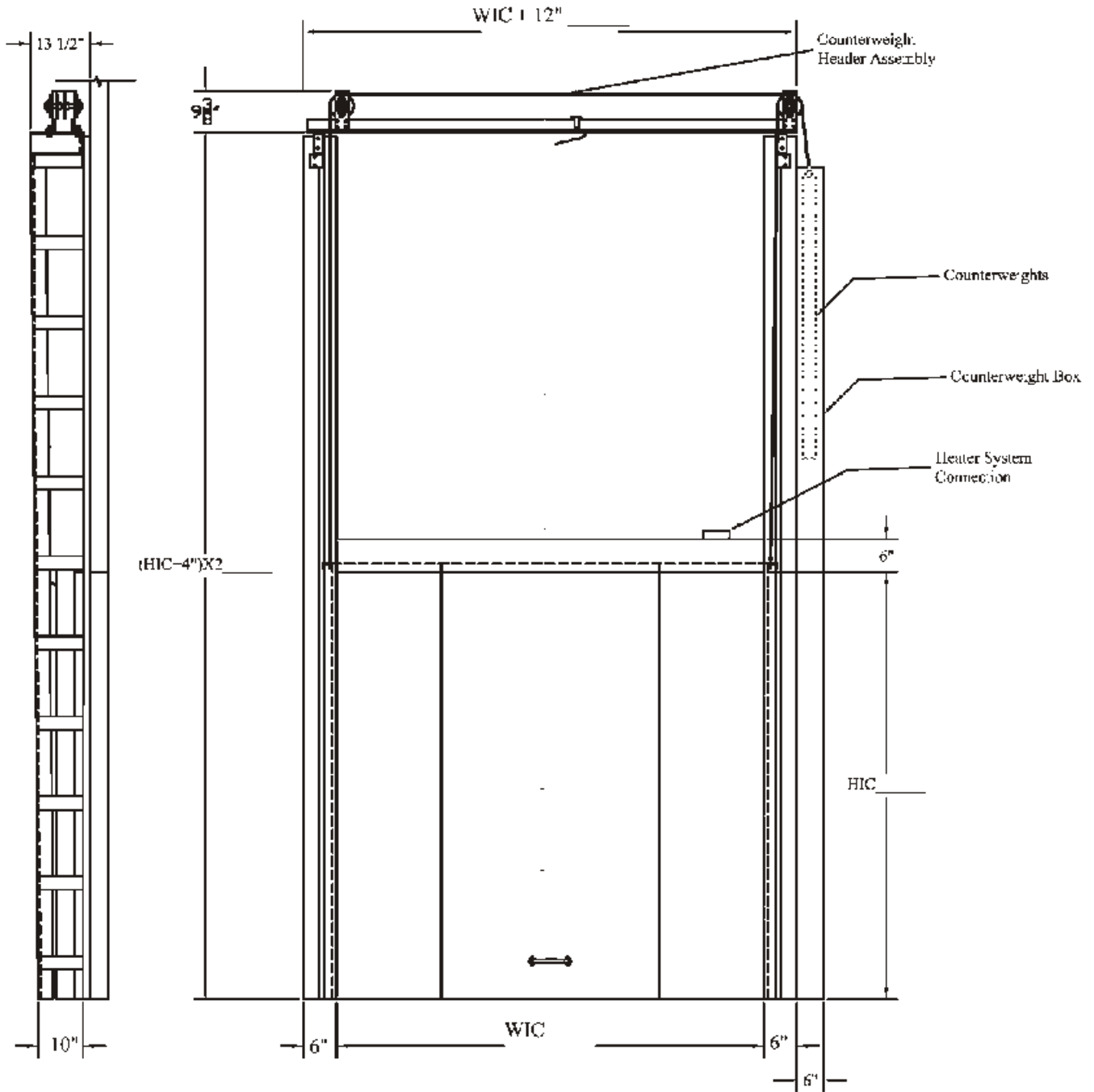
Kickplate

Lock

View Window

Wicket Door

America's "New Standard" for Cold Storage Doors



DISCLAIMER: As we are always striving to improve our products, FRANK DOOR Company reserves the right to alter specifications and design without incurring obligation.

America's "New Standard" for Cold Storage Doors