

DOOR COMPANY

TF SERIES

The FRANK DOOR TF SERIES is a complete doorway system that combines the efficiency of a rigid, insulated cold storage door with a high speed flexible traffic door. Tandem TS723 operators are interlocked for the power operation of each door with the cold storage door automatically closing during periods of traffic door inactivity. Suitable for coolers or freezers. Especially useful in facilities with high traffic volume of forklifts and/or pallet jacks.



Standard Features

Sizes:

- 96" X 96"
- 96" X 120"
- 96" X 144"

Finish

- 24 gauge metal
- 040 embossed aluminum

No Wood Construction

Insulation

- Foamed-in-place polyurethane
- R value 8 per inch

Panel Mounted Gasket

TS723 Power Operator

- Microprocessor Control System
 - 208V/230V/400V/460V/480V/Single Phase/60Hz
- Integrated precision - Self Positioning Software
 - Adjustable open and close speeds
 - Time delay close
 - Programming keypad
 - Automatically resets if overloads
- Corrosion Resistant enclosure

Drop Trac System (Patent Pending)

- Constructed of aircraft grade extruded aluminum for durability and low maintenance
- Available with stainless steel finish for highly corrosive environments (optional)
- Twin trolley assemblies distribute load to create maximum stability
- Stainless steel shafts and bearings
- Angled trolley design requires minimal effort to open and close
- Down and in design for a "sure seal"

Extruded Aluminum Side Casings and Header

- Extruded one piece design
- Insulated
- Increased durability
- Lower maintenance

Bottom Door Guide System

- Constructed of non-corrosive HDPE with panel mounted guide rail
- Eliminates stay rollers
- Low profile
- Adjustable bottom door sweep
- Helps create a perfect seal



Exterior Pull Handle

- Non-corrosive fiber-reinforced nylon and stainless steel
- Sleek modern design

Interior Pull Handle

- Recessed design

Heater System for Freezer Doors

- Perimeter heat on four sides of door panel and three sides of door frame
- Self regulating
- 120/1/60 UL listed
- Heated Transmission & Control Panel (Standard)

Pull Switch

- 2 Switches standard
- No heat required

Prewired Plug

- Reversing edge and optional lock are prewired at factory

Pneumatic Reversing Edge

Traffic Door

- Low temp clear PVC panels
- High speed operator < 1 second opening time
- 180° directional swing
- Operates with direction of traffic flow
- Prevents chimney effect of air flow with traffic
- Time delay close
- Break-a-way feature for drive arms with adjustable tension

Options

Available in Stainless Steel Finish

Call for Alternate Sizing

Power Options

Combined Motion/Presence Sensor Packages

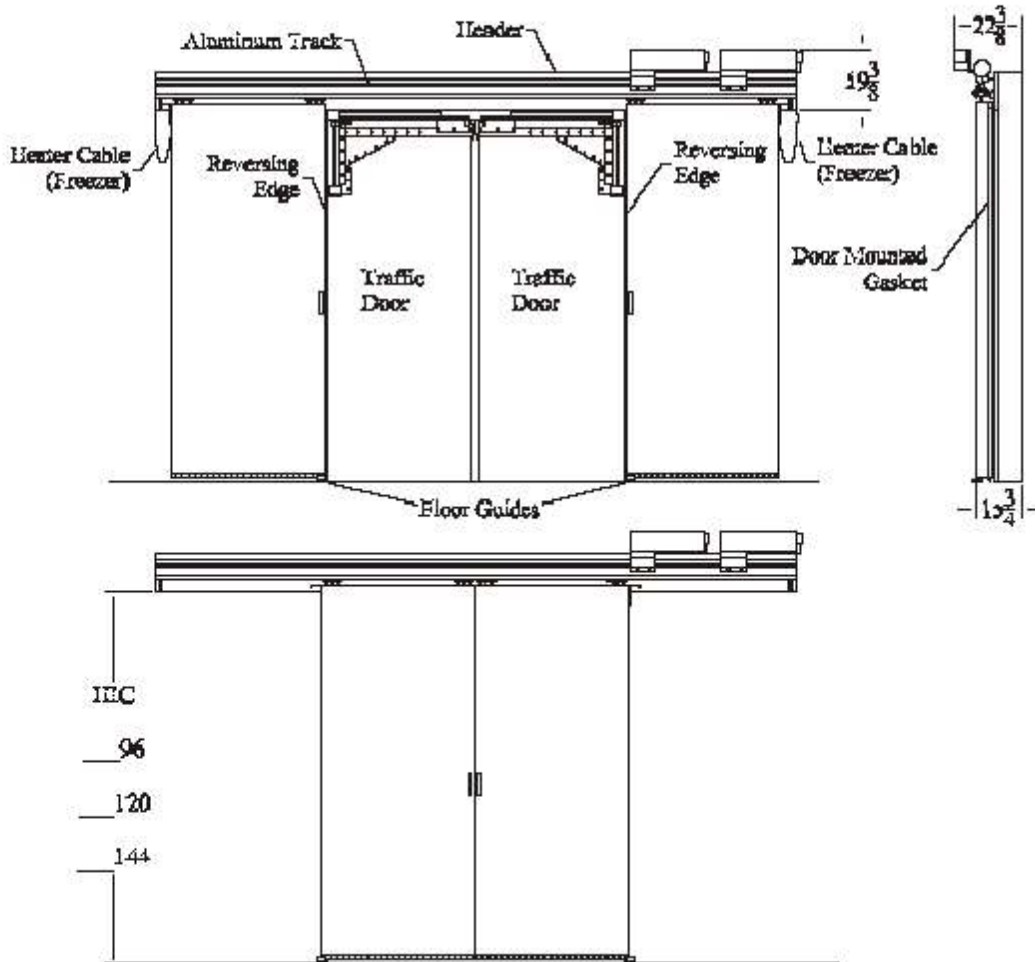
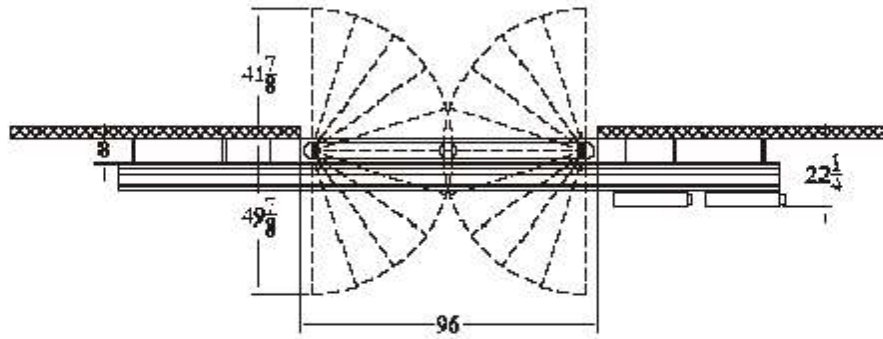
Loop Detector

Motion Detector

Photoelectric Sensor

Push Button Switch (2 Button)

Remote Control



DISCLAIMER: As we are always striving to improve our products, FRANK DOOR Company reserves the right to alter specifications and design without incurring obligation.

America's "New Standard" for Cold Storage Doors